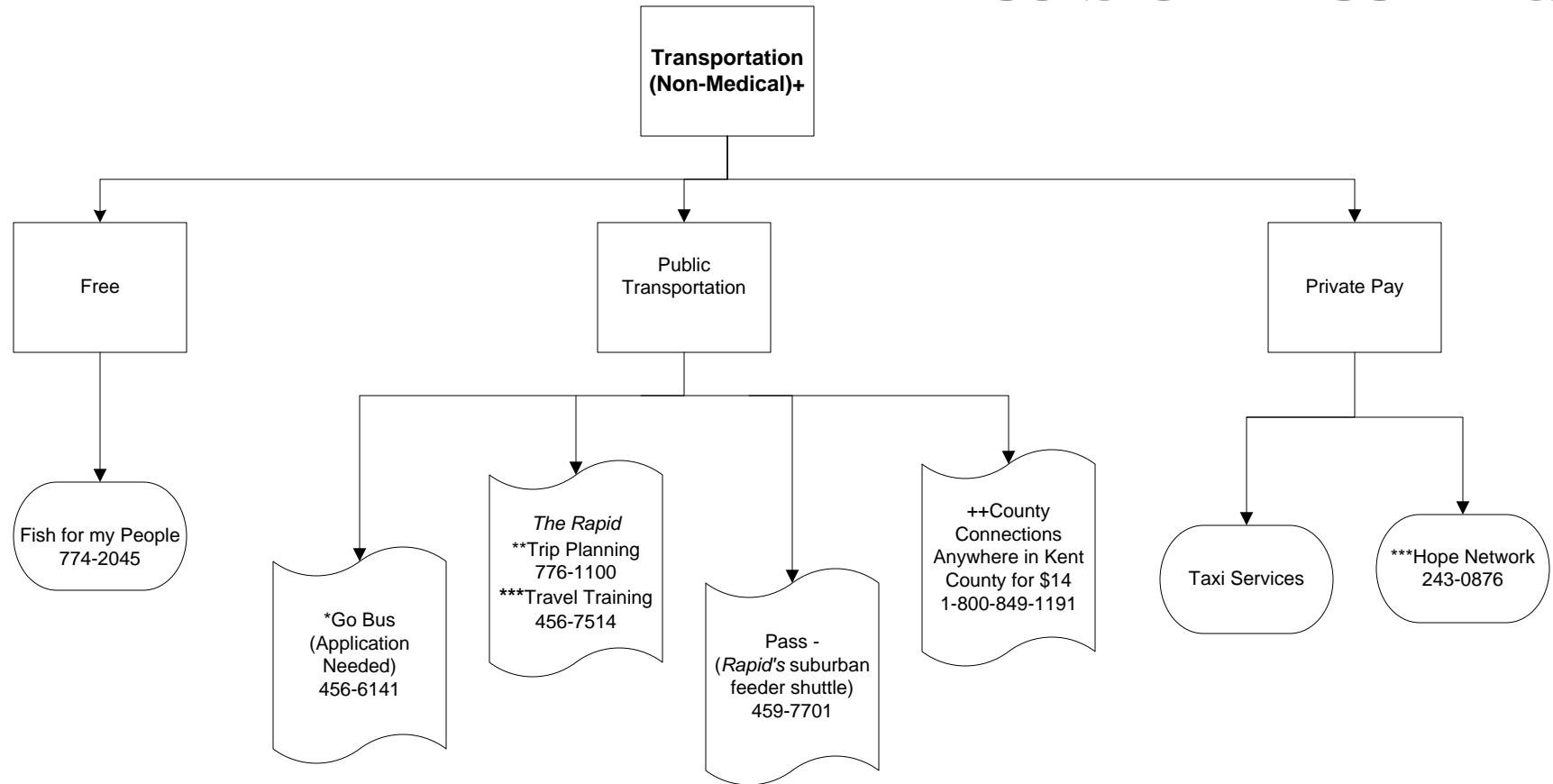




# Decision Tree-Infant



+Non-Medical Appointments are those such as Department of Human Services, Social Security Administration, etc..

\* For individuals with a disability

\*\*Trip Planning - Individualized bus routes and schedules.

\*\*\*Travel Training - For people who need to learn how to ride the bus

++ Curb to curb service. 24 hour notice required.